

## Robotic Precision without the Robot!

Your company needs to automate its end of line packaging. The problem the seemingly endless procession of equipment is often too complicated, too expensive, and too large. What is the solution?

Consider the simple, affordable, and compact SD55 case package from Impax Automation.

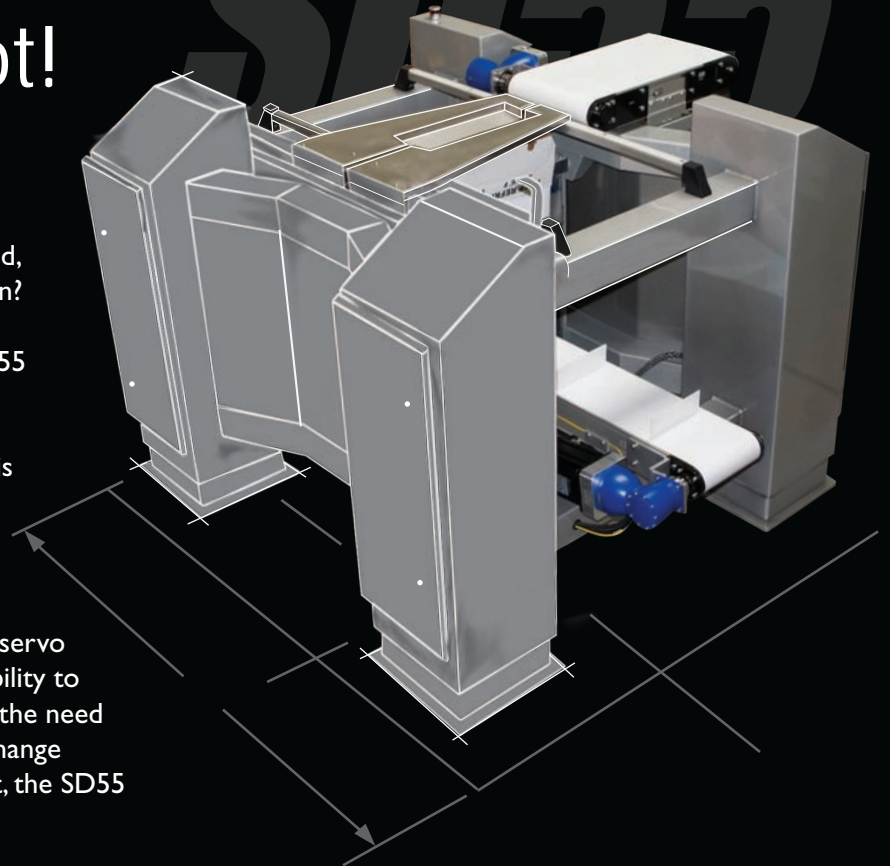
We would like you to think about a solution that is simple, affordable, and compact. Specifically, we would like you to consider the new SD55 Case Packer from Impax Automation.

No pneumatics here! All motion on the SD55 is servo driven. This allows precise motion with the flexibility to easily make product/pack pattern changes when the need arises. Whether it is simply a standard bag size change using pre-programmed recipes or a new product, the SD55 has the ability to adapt to your needs.

The SD55 Case Packer is designed to pack pillow pack bags into RSC, or other cases at rates up to 80 - 11lb bags per minute\*.

The SD55 is an extremely rugged machine with lean design and manufacturing practices at its core! This allows us to offer a very affordable solution.

To survive the environment in your plant the SD55 frame is constructed of stainless steel, the enclosures



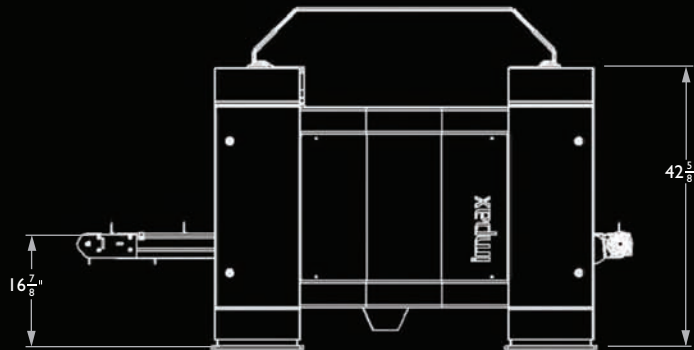
feature sloped tops to shed moisture away from costly electrical gear. At roughly 5 feet square the SD55 has one of the smallest footprints in the industry.

Impax Automation can provide design and manufacturing services. Contact us today to discuss your specific end of line packaging requirements.

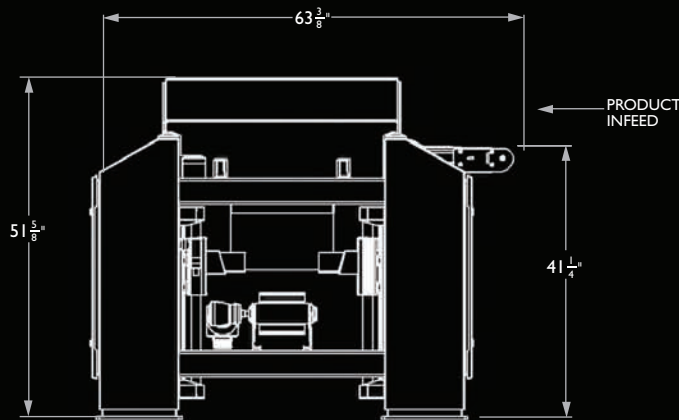
\* Speeds are dependent on product and case configuration

# SD55 Case Packer

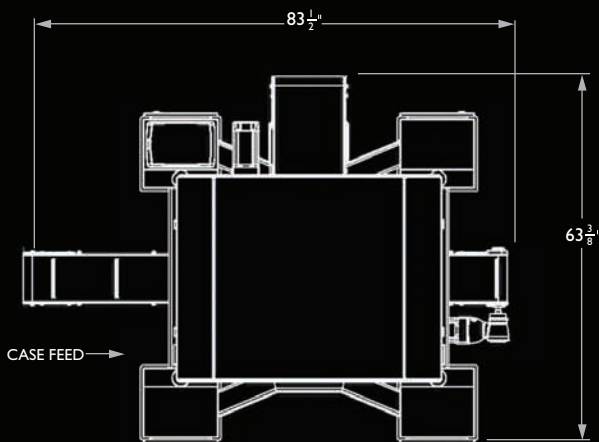
## SPECIFICATIONS



FRONT ELEVATION VIEW



SIDE ELEVATION VIEW



PLAN VIEW

## FEATURES

- Stainless steel construction
- Industry leading components
- No pneumatics
- Separation of power and control wiring
- Stable equipment platform
- Environmental protection
- Separate enclosures for power, controls, i/o, and drives
- Compact footprint
- Ease of operation & accessibility
- Servo controlled motion
- Quick product changeovers
- Adjustable product handling capability
- Perimeter guarding with safety controller

## TECHNICAL INFORMATION

Electrical:  
240V/460V 3Ph 60Hz. Standard  
24V Control Power

Pneumatic:  
N/A

Shipping Weight:  
Depends on configuration

Dimensions:  
L x W x H: Approx. 83 1/2" x 63 3/8" x 42 5/8"